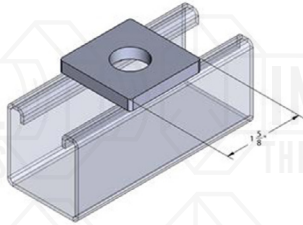


9001FF

SQUARE STRUT WASHER

1-⁵/₈" X 1-⁵/₈"



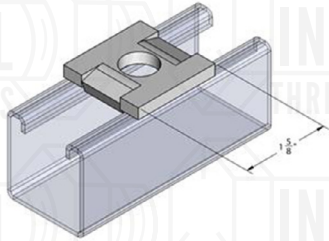
Material: 1/4"
Finish: Electro-Galvanized, SST 316 & 304
Hole Dim: 9/16"

Rod size	Weight
1/4"	.18
3/8"	.18
1/2"	.17
5/8"	.16
3/4"	.16
7/8"	.15

9002FF

SQUARE WASHER WITH GUIDES

1-⁵/₈" X 1-⁵/₈"



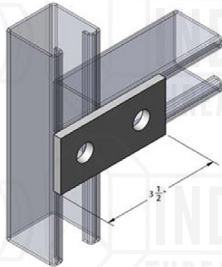
Material: 1/4"
Finish: Electro-Galvanized, SST 316 & 304
Hole Dim: 9/16"

Rod size	Weight
1/4"	.18
3/8"	.18
1/2"	.17
5/8"	.16
3/4"	.16

9003FF

2-HOLE SPLICE PLATE

1-⁵/₈" X 3-¹/₂"



Material: 1/4"
Finish: Electro-Galvanized, SST 316 & 304
Hole Dim: 9/16"
Wt. Each (lbs): .37