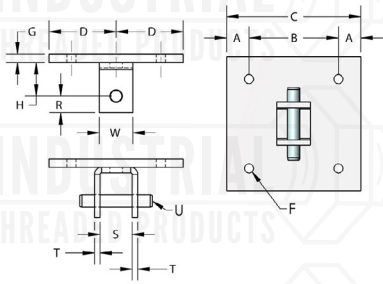




**FIG. 67
CONCRETE CLEVIS PLATE**



Manufactured in the USA



Material/Finish: Carbon steel 304 stainless steel 316 stainless steel
Plain electro-galvanized

Service: Designed for the attachment to concrete ceilings where flexibility is desired. Normally used in conjunction with FIG. 13 weldless eye nut or FIG. #26W welded eye rod.

Ordering: Specify rod size, figure number and finish.

ROD SIZE (inch)	A	B	C	D	F	G	H	S	T	U	W	WEIGHT EACH (lbs)	MAX REC LOAD (lbs)
3/8	1	8	10	5	9/16	3/8	2	1 1/2	1/4	1/2	2	11.87	610
1/2	1	8	10	5	9/16	3/8	2	1 1/2	1/4	5/8	2	12.01	1130
5/8	1	8	10	5	9/16	1/2	2	1 1/2	1/4	3/4	2	15.75	1810
3/4	1	8	10	5	11/16	1/2	2	1 3/4	3/8	7/8	2 1/2	16.99	2710
7/8	1	8	10	5	11/16	1/2	3	2 1/4	3/8	1	2 1/2	18.14	3770
1	2	8	12	6	13/16	3/4	3	2 3/4	1/2	1 1/8	3	37.01	4960
1 1/8	2	8	12	6	15/16	3/4	3	2 3/4	5/8	1 3/8	3	37.90	6230
1 1/4	2	8	12	6	15/16	3/4	3	3	5/8	1 3/8	4	40.72	8000
1 1/2	2	8	12	6	1 1/8	1	4	3 1/2	3/4	1 5/8	5	60.00	11630

Project Information		Approval Stamp
Project:		Notes:
Address:	Contractor:	
Date:	Engineer:	
Approved <input type="checkbox"/>	Approved as Noted <input type="checkbox"/>	Not Approved <input type="checkbox"/>