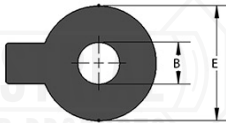


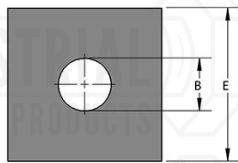


FIG. 599
SOCKET CLAMP WASHER

3/4" Style



1" through 1-1/2" Style



Material: Cast Iron/Carbon steel (see notes).
Finish: Plain, electro-galvanized.
Service: Designed to be used with figure 600 socket clamp, washer lugs hook around clamp bolts to secure tie rods within clamp legs.
Ordering: Specify size, figure number and finish.
Notes: The 3/4" rod size socket clamp washer is a cast iron product with tab feature. This accommodates pipe sizes 4"-12". The 1"-1 1/2" rod size washer are a carbon steel flat style. these accommodate pipe sizes 14"-24".

TIE ROD SIZE	B HOLE DIA	C	D	E	FOR USE WITH PIPE SIZE	WGT EACH (lbs)
3/4	7/8	5/8	1 3/4	2 3/8	3" - 12"	0.80
1	1 1/8	1/2	-	4	14"	2.16
1 1/8	1 1/4	1/2	-	4	16"	2.13
1 1/4	1 3/8	3/4	-	4	18"	3.14
1 3/8	1 1/2	3/4	-	4	20"	3.08
1 1/2	1 9/16	3/4	-	4	24"	3.02

Project Information		Approval Stamp
Project:		Notes:
Address:	Contractor:	
Date:	Engineer:	
Approved <input type="checkbox"/>	Approved as Noted <input type="checkbox"/>	Not Approved <input type="checkbox"/>