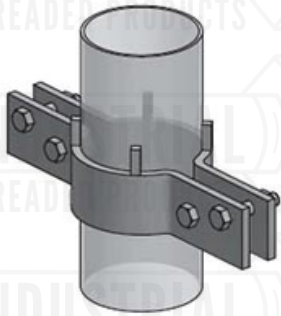


**FIG. 50HD
HEAVY DUTY RISER CLAMP**



Material/Finish: Carbon steel 304 stainless steel 316 stainless steel
Plain hot-dip galvanized

Service: Designed to support vertical piping from hanger rods or structural members such as beams and concrete slabs. Shear lugs field welded to pipe wall transfer pipe load to riser clamp.

Approvals: MSS SP-58 Type 42

Ordering: Specify pipe size, figure number and finish.

Notes: 650°F for Black Carbon Steel and Stainless Steel, 350°F for Hot-Dip Galvanized Carbon Steel. Maximum recommended load on rigid support. Loads may be doubled when used with springs or other resilient devices. Welding in accordance with AWS D1.1 for carbon steel and AWS D1.6 for stainless steel. Local pipe wall stress due to welded shear lug attachment evaluation available upon request, provide: pipe material, pipe wall thickness, operating pressure and temperature, and corrosion allowance. Concrete bearing plate as necessary by others. For special designs, contact factory with pipe size, material, load, operating temperature, C and L dimensions, finish and support type.

PIPE SIZE	T x W	A	B	C	D	L	S	R	WEIGHT EACH (lbs)	MAX REC LOAD (lbs)
2	1/2 x 2 1/2	1 1/4	2	18	1/2	22	3/4	1/2	16.00	900
2 1/2	1/2 x 2 1/2	1 1/4	2	20	1/2	24	3/4	1/2	18.00	900
3	3/8 x 3	1 1/4	2	20	5/8	24	1	5/8	27.30	1500
4	3/4 x 4	1 1/4	2	22	3/4	26	1 1/4	3/4	46.70	2200
5	3/4 x 4	1 1/4	2	22	3/4	26	1 1/4	3/4	47.40	2200
6	3/4 x 5	1 1/4	2	24	7/8	28	1 1/2	3/4	66.00	3000
8	3/4 x 5	1 1/4	2	27	7/8	31	1 1/2	3/4	74.00	3000
10	1 x 6	1 5/8	3	30	1 1/4	36	2 1/4	1	141.00	5500
12	1 x 7	1 7/8	3	32	1 1/2	38	2 1/2	1 1/4	185.00	7800
14	1 x 7	1 7/8	3	34	1 1/2	40	2 1/2	1 1/4	195.00	7800
16	1 1/4 x 8	2	3	36	1 1/2	42	2 1/2	1 1/4	283.00	9000
18	1 1/4 x 8	2	3	39	1 1/2	45	2 1/2	1 1/4	302.00	9000
20	1 1/4 x 8	2 5/8	4 1/4	42	2	50 1/2	3 1/2	1 1/2	364.48	13500
24	1 1/4 x 8	2 5/8	4 1/4	45	2	53 1/2	3 1/2	1 1/2	391.00	13500

