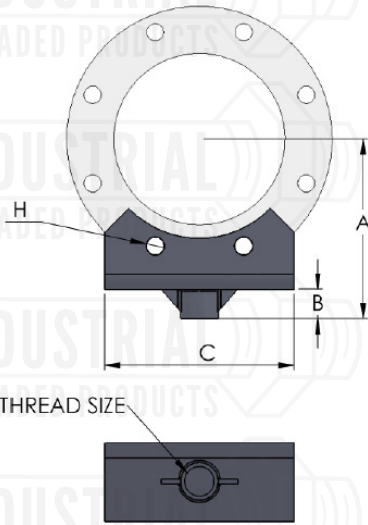


**FIG. 431KT  
ADJUSTABLE BOLT ON FLANGE SUPPORT KIT**



**Material:** Hot-Dip Galvanized Carbon Steel Saddle with Threaded Coupling, 1-1/4" x 8" Straight Tapped Nipple, 3" Long Steel 1-1/4" x 2" Reducing Coupling, (2) Stainless Steel Set Screws, 8" x 8" Steel Base Plate, 11 Step Installation Guide

**Finish:** All items listed above are hot-dip galvanized except for stainless steel set screws

**Service:** Designed to support pipe flange horizontally. Straight cut pipe thread on nipple provides up to 4-1/2 inches of vertical adjustability. Empire Industries' FIG. 431KT is designed to connect to back flow devices, water meters and to accommodate class 125 flange installation devices. The Fig. 431KT provides an easy to install pipe support system.

**Ordering:** Specify pipe size and figure number.

**Notes:** Support requires 2" schedule 40 extension pipe to be cut in the field.

Factory System Tested to 11,000 Lbs  
(Support Must Be Properly Aligned to Piping System)

Size	A	B	C	H	Thread Size
4	6-7/8	1-1/2	6	13/16	1-1/4-7
6	7-7/8	1-1/2	8	15/16	1-1/4-7
8	9-1/8	1-1/2	9-1/8	15/16	1-1/4-7

