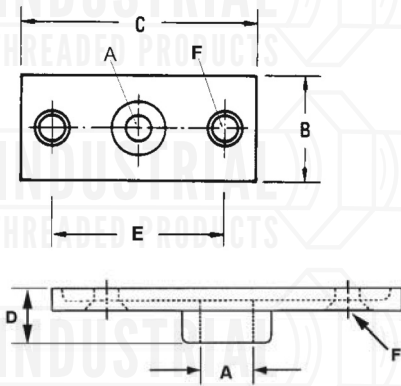




**FIG. 41A
HANGER FLANGE PLATE**



Material: Malleable iron, 304 (41ASSI) and 316 (41ASXI) stainless steel.

Finish: Electro-galvanized, Copper epoxy coated (COPPER-GARD). COPPER-GARD products offer superior corrosion protection due to the epoxy coating over electro-galvanized material. The alternative copper plating that has been done historically is for identification purposes and is not intended for corrosion protection. Refer to MSS SP-58,13.3.

Service: Designed for attaching hanger rod to wood beams, ceilings, walls and floor.

Ordering: Specify rod size, figure number and finish.

Notes: Stainless flange plates are recommended for applications where protection from corrosive environments is needed.

ROD SIZE A	B	C	D	E	F SCREW SIZE	WEIGHT EACH (lbs)
3/8-16	1 3/8	2 3/4	7/16	1 11/16	#12	0.18
1/2-13	1 3/8	2 3/4	7/16	1 11/16	#12	0.18

Project Information		Approval Stamp
Project:		Notes:
Address:	Contractor:	
Date:	Engineer:	
Approved <input type="checkbox"/>	Approved as Noted <input type="checkbox"/>	Not Approved <input type="checkbox"/>