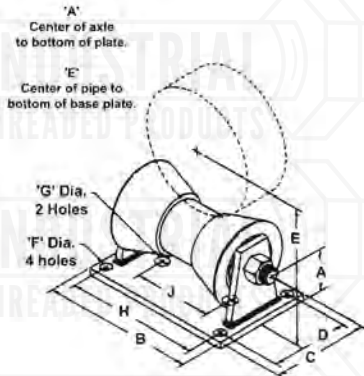


**FIG. 279S
PIPE ROLL STAND, CARBON STEEL**

**FIG. 279SS
PIPE ROLLER STAND, 304 STAINLESS STEEL**



Material: Carbon steel chair and axle with cast iron roller.
Finish: Plain, galvanized, electro-galvanized, or painted.
Service: Designed for support of pipe where longitudinal movement may occur due to expansion and contraction where vertical adjustment is not necessary.
Approvals: Complies with Federal Specification WW-H-171-E (Type# 45), A-A-1192A (Type# 44) and Manufacturers' Standardization Society MSS SP-58 and SP-69 (Type# 44).
Ordering: Specify roller size, figure number and finish. Please remember to consider insulation thickness when sizing rollers.
Notes: Stainless steel roller chairs are recommended for applications where protection from corrosive environments is needed.
Available domestic

PIPE SIZE	A	B	C	D	E	DIA. F	DIA. G	H	J	WGT EACH (lbs)	MAX REC LOAD (lbs)
2	1 3/4	8 3/8	6	4	3 11/16	9/16	1	3 3/8	6 3/8	5.08	390
2 1/2	1 3/4	8 3/8	6	4	3 15/16	9/16	1	3 3/8	6 3/8	5.08	390
3	1 3/4	8 3/8	6	4	4 1/4	9/16	1	3 3/8	6 3/8	5.08	390
3 1/2	1 3/4	8 3/8	6	4	4 1/2	9/16	1	3 3/8	6 3/8	5.08	390
4	2	9 7/8	6	4 1/4	5	9/16	1	4 3/4	7 7/8	6.31	650
5	2	9 7/8	6	4 1/4	5 9/16	9/16	1	4 3/4	7 7/8	6.31	950
6	2	9 7/8	6	4 1/4	6 1/16	9/16	1	4 3/4	7 7/8	6.31	950
8	3 3/8	8 5/8	8	5	8 13/16	11/16	1	7	4	13.65	2100
10	3 3/8	8 5/8	8	5	9 7/8	11/16	1	7	4	13.65	2100
12	3 7/8	11	8	6	11 7/16	13/16	1	9	5 3/4	21.00	3075
14	3 7/8	11	8	6	12 1/16	13/16	1	9	5 3/4	21.00	3075
16	4 1/4	12 3/8	10	6 1/2	13 5/8	13/16	1	10 3/8	6 3/4	34.23	4980
18	4 1/4	12 3/8	10	6 1/2	14 11/16	13/16	1	10 3/8	6 3/4	34.23	4980
20	4 1/4	12 3/8	10	6 1/2	15 11/16	13/16	1	10 3/8	6 3/4	34.23	4980
24	4 3/8	13 1/2	10	6 1/2	17 11/16	13/16	1	11 1/2	7 1/2	40.00	6100
30	5 1/8	17	10	7 3/4	21 3/4	1 1/16	1	14 1/4	10	71.32	7500
36	5 3/4	20	12	9	25 3/4	1 3/8	1	17	12	147	12000
42	5 3/4	20	12	9	28 7/8	1 3/8	1	17	12	147	12000

Project Information		Approval Stamp
Project:		Notes:
Address:	Contractor:	
Date:	Engineer:	
Approved <input type="checkbox"/>	Approved as Noted <input type="checkbox"/>	Not Approved <input type="checkbox"/>