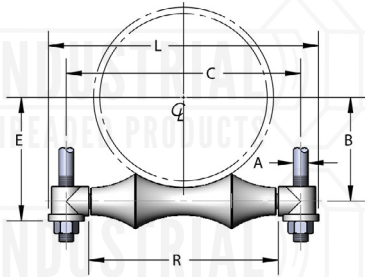




FIG. 277
ADJUSTABLE TWO-ROD ROLLER HANGER



Material: Carbon steel axle with cast iron roller and socket ends. Also available in 316 stainless steel

Finish: Plain, electro-galvanized or painted.

Service: Designed for the suspension of pipe where longitudinal movement may occur due to expansion and contraction, and vertical adjustment is necessary.

Approvals: Complies with Federal Specification WW-H-171-E (Type# 42), A-A-1192A (Type# 41) and Manufacturers' Standardization Society MSS SP-58 and SP-69 (Type# 41).

Ordering: Specify roller size, figure number and finish. Please remember to consider insulation thickness when sizing rollers.

Notes: Available domestic

PIPE ROLLER SIZE	PIPE OD	AXLE SIZE	A	B	C	E	L	R	WGT EACH (lbs)	MAX REC LOAD (lbs)
2	2.375	3/8	3/8	19/16	4 3/8	2 3/16	5 5/8	2 7/8	0.760	600
2 1/2	2.875	1/2	1/2	1 7/8	5 1/8	2 5/8	6 1/2	3 1/8	1.185	660
3	3.500	1/2	1/2	2 1/8	5 5/8	2 7/8	7	3 3/4	1.385	700
3 1/2	4.000	1/2	1/2	2 1/2	5 7/8	3 1/4	7 1/4	3 7/8	1.500	750
4	4.500	1/2	5/8	2 13/16	7	3 13/16	8 9/16	4 3/4	2.110	750
5	5.563	5/8	5/8	3 3/8	8 1/8	4 3/8	9 3/4	5 3/4	2.570	750
6	6.625	3/4	3/4	3 15/16	9 3/4	4 15/16	11 5/8	6 7/8	4.395	1070
7	7.625	3/4	3/4	4 1/2	10 1/2	5 1/4	12 1/2	8	5.160	1100
8	8.625	7/8	7/8	5 1/8	12 1/8	6 3/8	14 1/4	8 7/8	7.425	1350
10	10.750	7/8	7/8	6 1/4	14	7 1/2	16 1/4	11	9.170	1730
12	12.750	7/8	7/8	7 5/16	15 3/4	8 9/16	18	13	13.150	2400
14	14.000	1 1/8	1	8 3/8	17 3/4	9 13/16	20 1/2	14 1/4	18.745	3130
16	16.000	1 1/4	1	9 1/2	20 9/16	10 15/16	23 3/8	16 7/8	24.540	3970
18	18.000	1 1/4	1	10 7/16	22	11 7/8	24 7/8	18 5/16	27.200	4200
20	20.000	1 1/4	1 1/4	11 1/2	24	13 3/8	27	20 1/4	32.000	4550
24	24.000	1 1/2	1 1/2	13 13/16	28 3/4	16 1/6	32	24 1/4	54.000	6160
30	30.000	1 3/4	1 1/2	17 1/4	35 5/8	19 5/8	39 3/4	30 1/4	82.000	7290

Project Information		Approval Stamp
Project:		Notes:
Address:	Contractor:	
Date:	Engineer:	
Approved <input type="checkbox"/> Approved as Noted <input type="checkbox"/> Not Approved <input type="checkbox"/>		