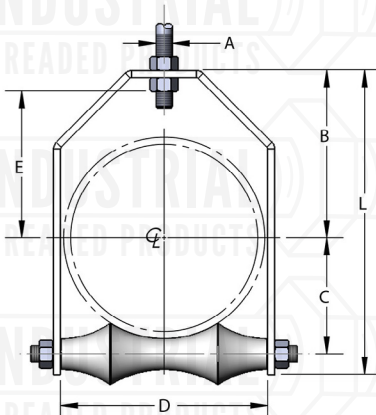




FIG. 272
ADJUSTABLE ROLLER HANGER



"E" dimension includes exposed rod threads beyond bottom of the hex nut. Exposed rod thread dimension is equal to the diameter of the rod used.

Material: Carbon steel yoke and crossbolt with cast iron roller. Also available in 316 stainless steel

Finish: Plain, electro-galvanized or painted.

Service: Designed for the suspension of pipe where longitudinal movement of pipe may occur due to expansion and contraction, and where vertical adjustment may be necessary.

Approvals: Complies with Federal Specification WW-H-171-E (Type# 44), A-A-1192A (Type# 43) and Manufacturers' Standardization Society MSS SP-58 and SP-69 (Type# 43).

Ordering: Specify roller size, figure number and finish. Please remember to consider insulation thickness when sizing rollers.

Notes: Available domestic

HANGER SIZE	MATERIAL SIZE	A	B	C	D	E	L	WGT EACH (lbs)	MAX REC LOAD (lbs)
2	8ga x 1.25	1/2	3 3/8	1 9/16	2 7/8	2 1/4	5 5/8	1.14	150
2 1/2	8ga x 1.25	1/2	3 15/16	1 7/8	3 1/4	2 13/16	6 1/2	1.47	225
3	8ga x 1.25	1/2	4 5/16	2 1/8	3 13/16	3 3/16	7 13/16	1.62	310
3 1/2	3ga x 1.50	1/2	4 5/8	2 1/2	4 5/16	3 7/16	7 15/16	2.76	390
4	3ga x 1.50	5/8	4 13/16	2 13/16	4 7/8	3 3/8	8 1/2	3.16	475
5	3ga x 2.00	5/8	5 3/4	3 3/8	5 7/8	4 5/16	9 15/16	4.62	685
6	3ga x 2.00	3/4	6 3/8	3 15/16	7	4 5/8	11 1/4	6.08	780
7	3ga x 2.00	3/4	6 5/16	4 1/2	8	4 9/16	11 5/8	7.59	780
8	3/8 x 2.00	7/8	7 9/16	5 1/8	9	5 7/16	13 7/8	11.83	780
10	3/8 x 2.50	7/8	8 3/4	6 1/4	11 1/8	6 5/8	16 1/4	17.29	965
12	1/2 x 2	7/8	9 5/8	7 3/8	13	7 7/8	18 7/8	22.50	1200
14	1/2 x 2 1/2	1	11 1/4	8 3/8	14 1/4	9 1/4	21 7/8	33.00	1200
16	1/2 x 3	1	12 1/4	9 3/8	16 1/4	10 1/4	24 1/8	46.00	1200
18	1/2 x 3	1	13 1/4	10 1/2	18 1/4	11 1/4	26 1/2	50.50	1400
20	5/8 x 3	1 1/4	14 1/4	11 5/8	20 1/4	12 1/4	28 1/8	65.00	1600

Project Information		Approval Stamp
Project:		Notes:
Address:	Contractor:	
Date:	Engineer:	
Approved <input type="checkbox"/>	Approved as Noted <input type="checkbox"/>	Not Approved <input type="checkbox"/>