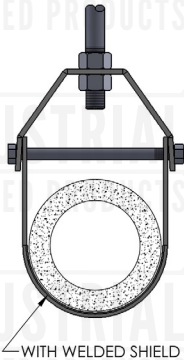


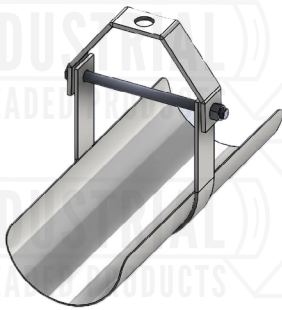
**FIG. 11WS
CLEVIS WITH WELDED SHIELD**



Manufactured
in the USA



WITH WELDED SHIELD



Material/Finish: Carbon steel clevis hanger with pre-galvanized shield also available in 304 and 316 stainless steel.

Plain electro-galvanized

Service: Designed for the suspension of stationary insulated pipelines. Insulation protection shield is spot welded in place.

Ordering: Specify hanger size number and figure number.

Notes: To determine proper hanger size use hanger selection guide below. Upper locknut must be tightened securely to assure proper hanger performance.

PIPE SIZE	THICKNESS OF PIPE INSULATION					
	1/2"	1"	1 1/2"	2"	2 1/2"	3"
1/2	1 1/2	2 1/2	3 1/2	5	6	7
3/4	2	3	3 1/2	5	6	7
1	2	3	4	5	6	7
1 1/4	2 1/2	3 1/2	4	5	6	7
1 1/2	2 1/2	3 1/2	5	6	7	8
2	3	4	5	6	7	8
2 1/2	3 1/2	5	6	7	8	10
3	4	5	6	7	8	10
3 1/2	5	6	7	8	10	10
4	5	6	7	8	10	10
5	6	7	8	10	10	12
6	7	8	10	10	12	12
8	10	10	12	12	14	16
10	12	12	14	16	16	18
12	14	16	16	18	18	20
14	16	16	18	18	20	20
16	18	18	20	20	24	24

Project Information		Approval Stamp
Project:		Notes:
Address:	Contractor:	
Date:	Engineer:	
Approved <input type="checkbox"/>	Approved as Noted <input type="checkbox"/>	Not Approved <input type="checkbox"/>